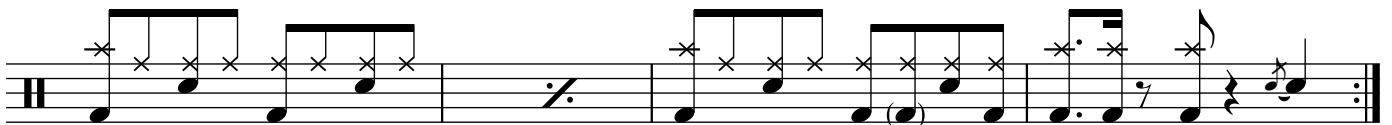
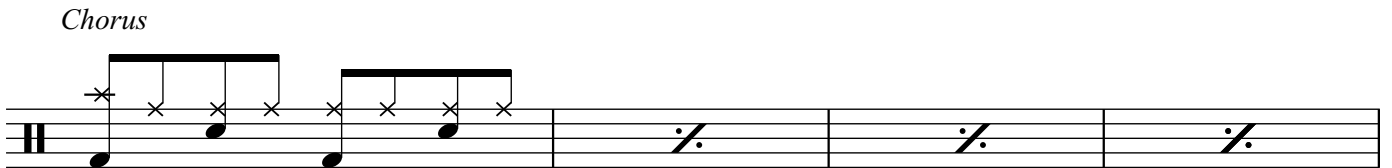
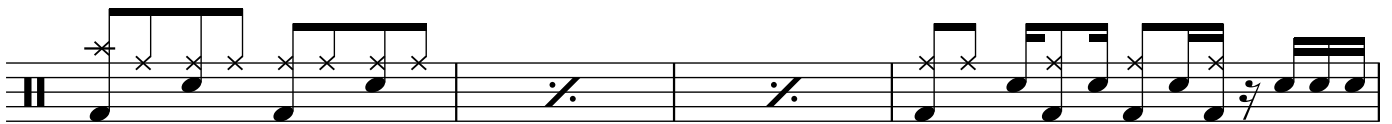
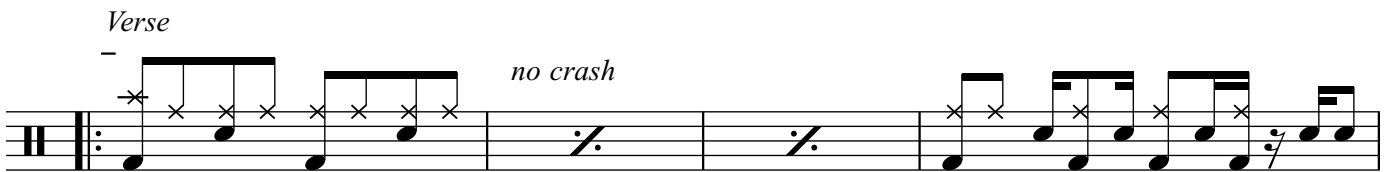
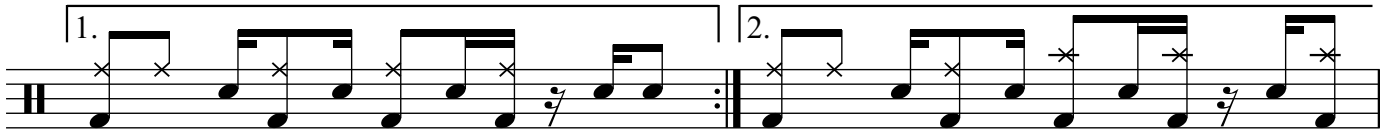
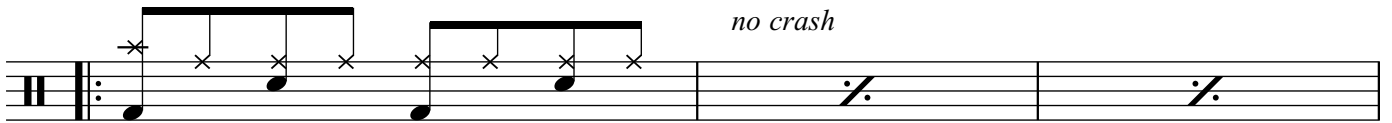
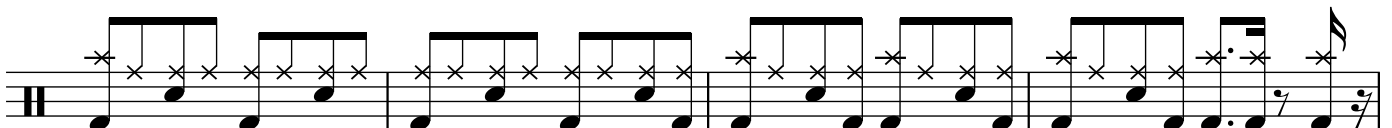
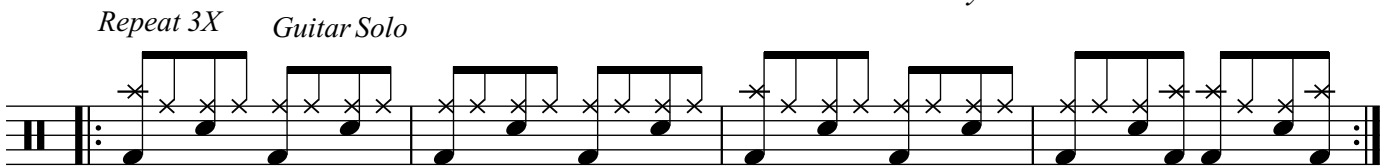


Back in Black



1 X only



Back in Black

2

Chorus

Musical notation for the chorus of 'Back in Black'. It consists of eight staves of music. The notation includes various rhythmic patterns, including eighth and sixteenth notes, and rests. There are several 'x' marks above the notes, indicating specific drum techniques or accents. The music is written in a standard staff format with a key signature of one flat and a time signature of 4/4.

Repeat 3X

no crash

Musical notation for the repeat section of the chorus. It consists of two staves of music. The notation includes various rhythmic patterns, including eighth and sixteenth notes, and rests. There are several 'x' marks above the notes, indicating specific drum techniques or accents. The music is written in a standard staff format with a key signature of one flat and a time signature of 4/4. The first staff has a double bar line with repeat dots, and the second staff has a double bar line with repeat dots at the end.

Fade Out