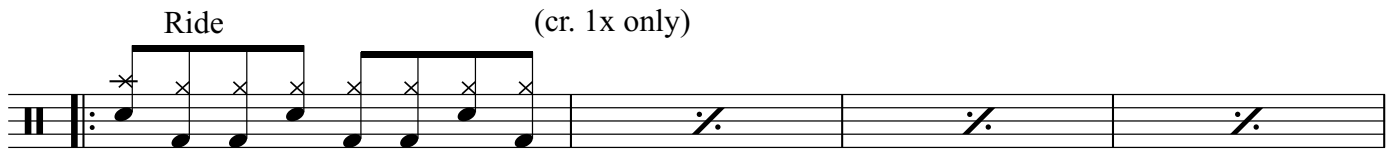
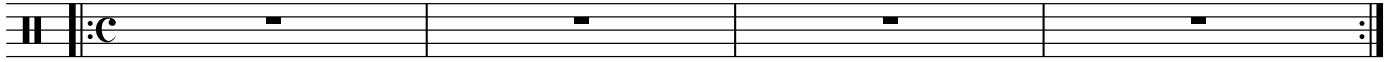


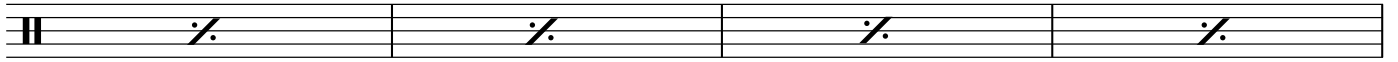
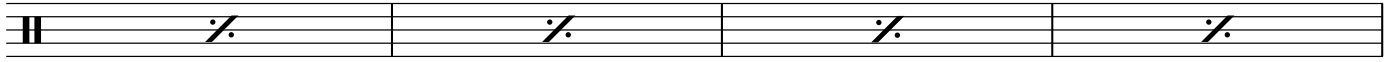
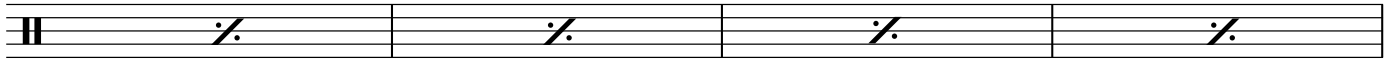
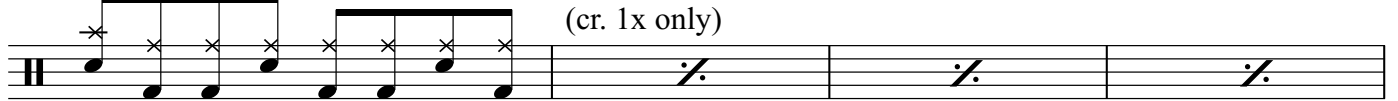
# Clocks

## Intro Piano Riff



Verse 1 Lights go out and I can't be saved

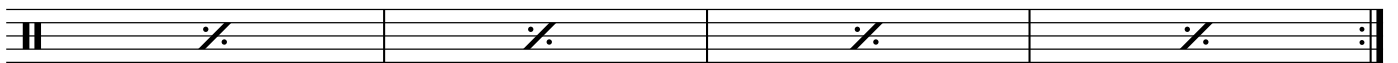
Hi-Hat Verse 2 Confusion never stops



Chorus you-ooooou are



you-ooooou are



2 you-ooooou are **Clocks**

2X

Musical notation for the first section of 'Clocks'. It features a drum set icon on the left. The notation consists of a single staff with a treble clef and a key signature of one flat. The first two measures contain a rhythmic pattern of eighth notes with 'x' marks above them, indicating cymbal hits. The pattern is: quarter note (x), eighth note (x), eighth note (x), quarter note (x), quarter note (x), eighth note (x), eighth note (x). This is followed by three measures of rests, each with a double bar line and repeat dots at the end.

4X Ride Piano Riff

Musical notation for the 'Ride Piano Riff' section. It features a drum set icon on the left. The notation consists of a single staff with a treble clef and a key signature of one flat. The first four measures contain a rhythmic pattern of eighth notes with 'x' marks above them, indicating cymbal hits. The pattern is: quarter note (x), eighth note (x), eighth note (x), quarter note (x), quarter note (x), eighth note (x), eighth note (x). This is followed by two measures of rests, each with a double bar line and repeat dots at the end.

**Bridge** and nothing else compaeres

4X Ride

Musical notation for the 'Ride' section of the bridge. It features a drum set icon on the left. The notation consists of a single staff with a treble clef and a key signature of one flat. The first four measures contain a rhythmic pattern of eighth notes with 'x' marks above them, indicating cymbal hits. The pattern is: quarter note (x), eighth note (x), eighth note (x), quarter note (x), quarter note (x), eighth note (x), eighth note (x). This is followed by two measures of rests, each with a double bar line and repeat dots at the end.

Piano Riff

Musical notation for the 'Piano Riff' section. It features a drum set icon on the left. The notation consists of a single staff with a treble clef and a key signature of one flat. The first measure contains a quarter note with an 'x' mark above it, indicating a cymbal hit. The remaining seven measures contain rests.

4X Ride you-ooooou are

Musical notation for the 'Ride' section of the second part of 'Clocks'. It features a drum set icon on the left. The notation consists of a single staff with a treble clef and a key signature of one flat. The first four measures contain a rhythmic pattern of eighth notes with 'x' marks above them, indicating cymbal hits. The pattern is: quarter note (x), eighth note (x), eighth note (x), quarter note (x), quarter note (x), eighth note (x), eighth note (x). This is followed by two measures of rests, each with a double bar line and repeat dots at the end.

**Outro** Ride Home, home, where I wanted to go

4X

Musical notation for the 'Ride' section of the outro. It features a drum set icon on the left. The notation consists of a single staff with a treble clef and a key signature of one flat. The first eight measures contain a rhythmic pattern of eighth notes with 'x' marks above them, indicating cymbal hits. The pattern is: quarter note (x), eighth note (x), eighth note (x), quarter note (x), quarter note (x), eighth note (x), eighth note (x). This is followed by two measures of rests, each with a double bar line and repeat dots at the end.

Musical notation for the 'Piano Riff' section of the outro. It features a drum set icon on the left. The notation consists of a single staff with a treble clef and a key signature of one flat. The first measure contains a quarter note with an 'x' mark above it, indicating a cymbal hit. The remaining seven measures contain rests.