

GIMME SHELTER

♩ = 118

INTRO

The Intro section consists of seven staves of music. The first staff is a grand staff with a treble clef and a 4/4 time signature. It begins with three measures of whole rests, followed by two eighth notes (G4 and F4) and a quarter note (E4). The subsequent six staves are for a drum set, indicated by a double bar line with two vertical lines. They feature a complex rhythmic pattern of eighth and sixteenth notes, often beamed together. The pattern includes various accents and dynamic markings such as > and >. The section concludes with repeat signs (double bar lines with dots) and a final measure containing a '4' above the staff.

VERSE *Oh, a storm is threat'ning...*

The Verse section consists of two staves of music. The first staff is a grand staff with a treble clef and a 4/4 time signature. It begins with a quarter rest, followed by a quarter note (G4) and a quarter note (F4). The subsequent six staves are for a drum set, indicated by a double bar line with two vertical lines. They feature a complex rhythmic pattern of eighth and sixteenth notes, often beamed together. The pattern includes various accents and dynamic markings such as > and >. The section concludes with repeat signs (double bar lines with dots) and a final measure containing a '4' above the staff.

GIMME SHELTER

2

CHORUS

War, children, it's just a shot away...

The first Chorus section consists of three staves of music. Each staff begins with a treble clef and a key signature of one flat (B-flat). The first staff starts with a star symbol above the first note. The music features a rhythmic pattern of eighth notes with 'x' marks above them, indicating a specific drumming technique. The melody is primarily on the G4 line, with some descending eighth-note patterns. The section concludes with two measures marked with a double bar line and a repeat sign.

VERSE 2

Ooh, see the fire is sweepin'...

The Verse 2 section consists of two staves of music. It follows the same musical notation style as the Chorus, with a treble clef and one flat key signature. The melody is similar to the Chorus but includes some descending eighth-note patterns. The section ends with a double bar line and a repeat sign.

CHORUS

War, children, it's just a shot away...

The second Chorus section consists of four staves of music. It repeats the musical notation from the first Chorus section, including the treble clef, one flat key signature, and the rhythmic patterns of eighth notes with 'x' marks. The melody is consistent with the first Chorus. The section concludes with a double bar line and a repeat sign.

GIMME SHELTER

GUITAR SOLO

Staff 1 of the guitar solo section, featuring a series of eighth notes with 'x' marks above them, indicating a specific fretting pattern.

Staff 2 of the guitar solo section, continuing the eighth-note pattern with 'x' marks.

Staff 3 of the guitar solo section, continuing the eighth-note pattern with 'x' marks.

VOCAL

Staff 1 of the vocal section, featuring a series of eighth notes with 'x' marks above them, indicating a specific fretting pattern.

Staff 2 of the vocal section, continuing the eighth-note pattern with 'x' marks.

Staff 3 of the vocal section, continuing the eighth-note pattern with 'x' marks.

Staff 4 of the vocal section, continuing the eighth-note pattern with 'x' marks.

VERSE 2

The floods is threat'ning...

Staff 1 of Verse 2, featuring a series of eighth notes with 'x' marks above them, indicating a specific fretting pattern.

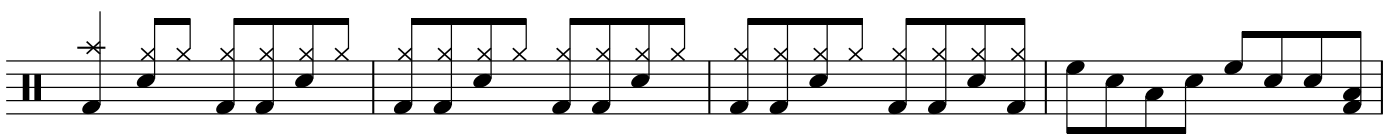
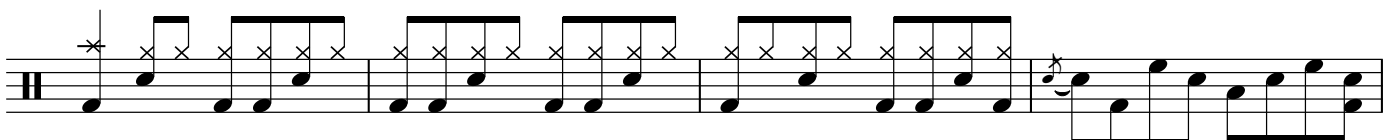
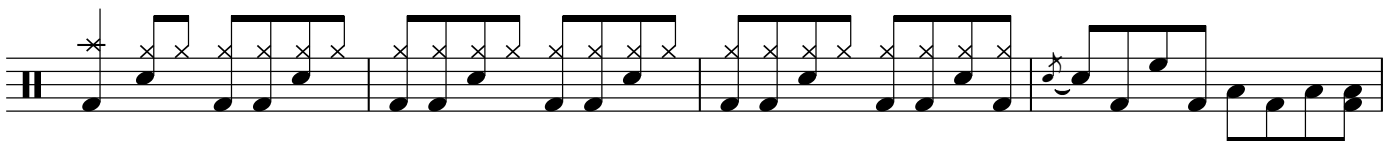
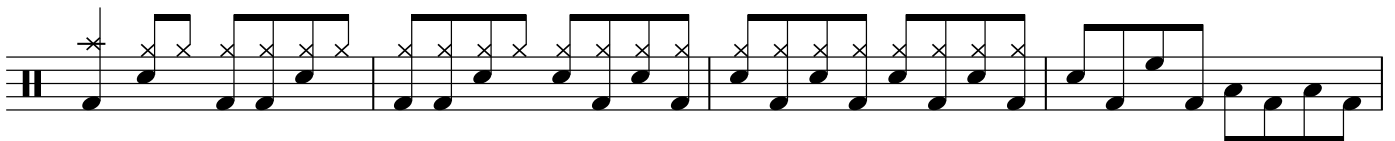
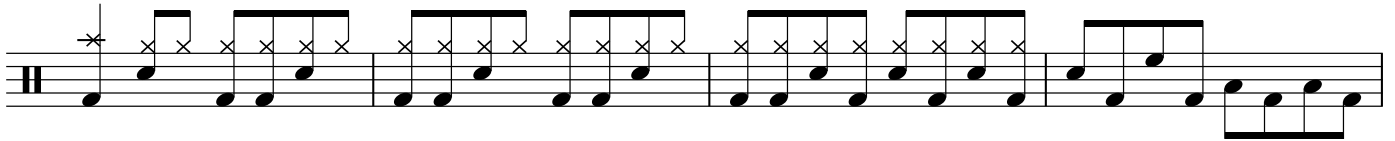
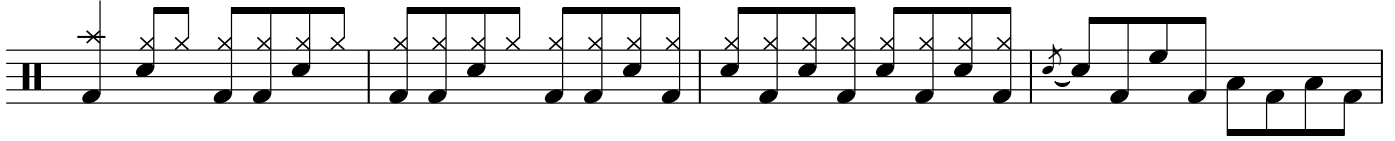
Staff 2 of Verse 2, continuing the eighth-note pattern with 'x' marks.

GIMME SHELTER

4

CHORUS

War, children, it's just a shot away...



Fade Out

