

DRUM SET

Open H.H. Bell of Ride
Crash Ride
Stick on Rim
Hi-Hat with Foot

HARDER TO BREATHE

VERSE 1 *How dare you say that my...*

Four staves of drum notation for Verse 1. The notation includes various symbols for Hi-Hat, Snare, and Bass Drum, with some notes marked with 'x' for accents or specific techniques like 'Stick on Rim'.

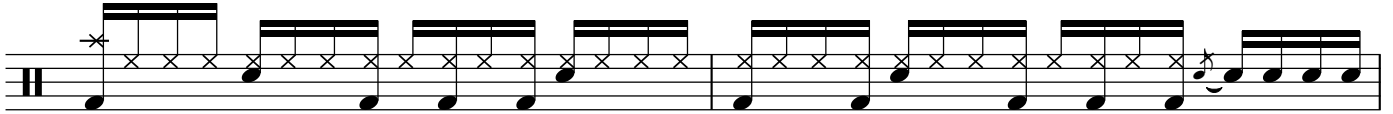
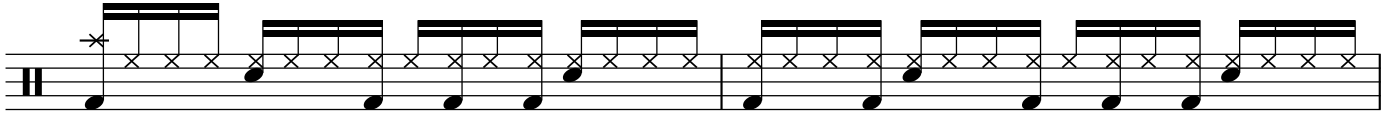
CHORUS *But when it gets cold outside and you got nobody to love...*

Three staves of drum notation for Chorus. The notation includes various symbols for Hi-Hat, Snare, and Bass Drum, with some notes marked with 'x' for accents or specific techniques like 'Stick on Rim'.

HARDER TO BREATHE

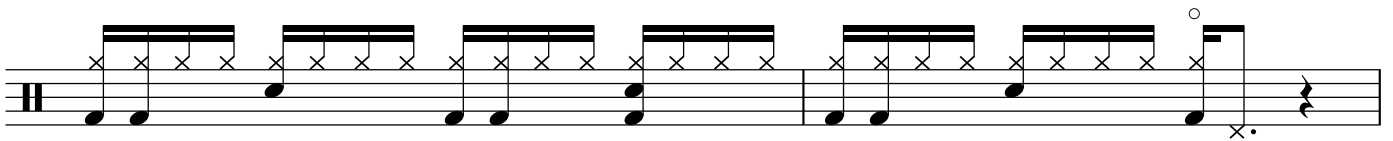
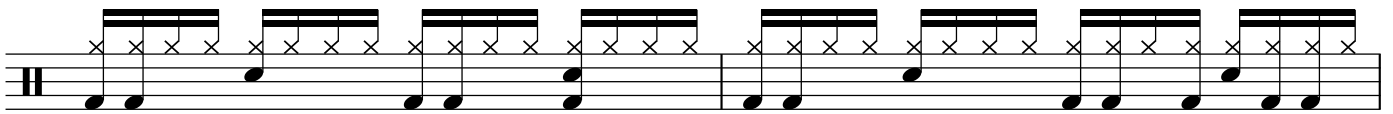
POST - CHORUS

Is there anyone out there cause it's getting harder and harder to...



VERSE 2

What you are doing is screwing things up inside my head...



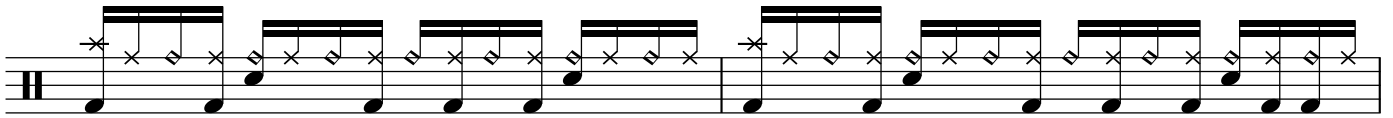
CHORUS

But when it gets cold outside and you got nobody to love...

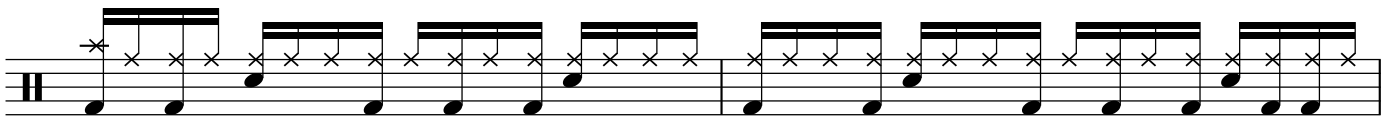


HARDER TO BREATHE

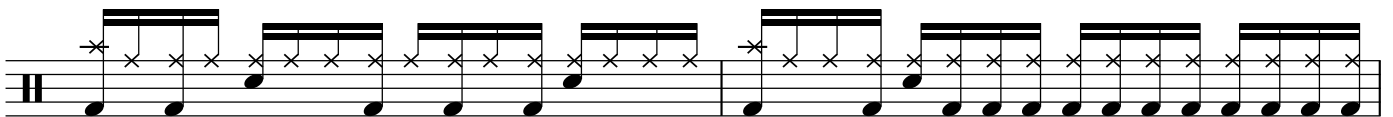
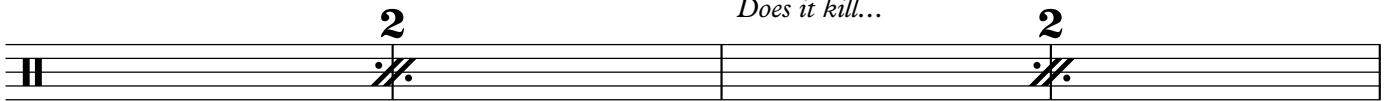
Is there anyone out there cause it's getting harder and harder to...



BRIDGE



Does it kill...

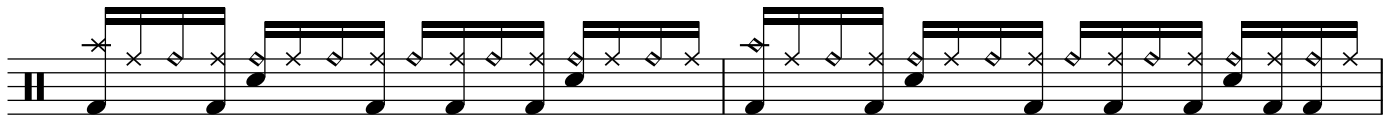


CHORUS

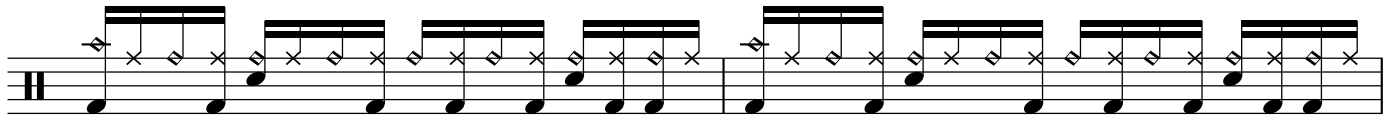
But when it gets cold outside and you got nobody to love...



HARDER TO BREATHE



Is there anyone out there cause it's getting harder and harder to...



OUTRO *Is there anyone out there cause it's getting harder and harder to...*

