

DRUM SET

Open H.H. Crash Close H.H.

○ ✱ +

Hi-Hat ✕ ○ ✱ +
Snare Drum ●
Bass Drum ●
✕ Hi-Hat with Foot

HOW TO SAVE A LIFE

4

VERSE 1 *Step one, you say we need to talk*

8

Some sort of window to your right

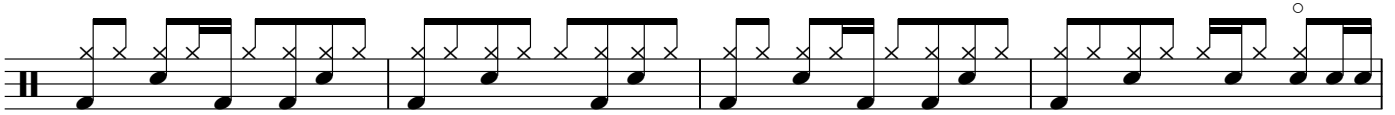
CHORUS *Where did I go wrong?...*

3

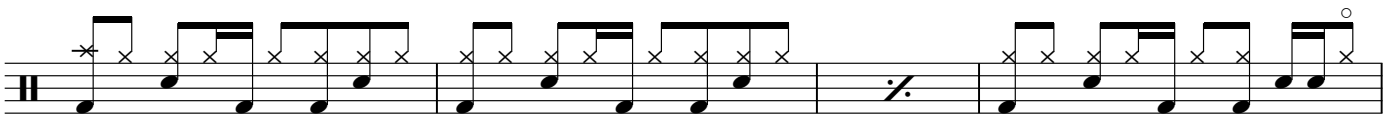
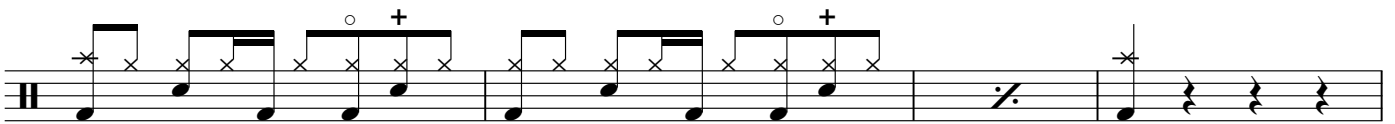
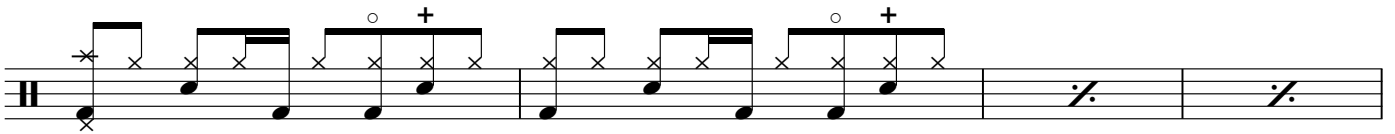
VERSE 2 *Let him know that you know best...*

HOW TO SAVE A LIFE

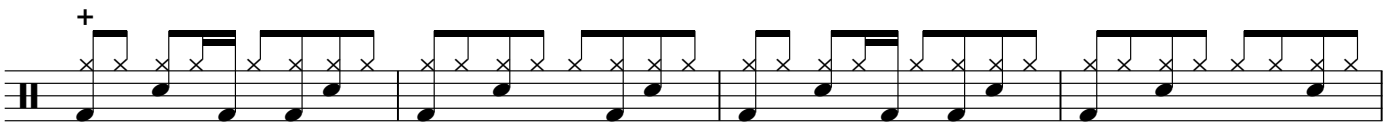
Lay down a list of what is wrong...



CHORUS *Where did I go wrong?...*



VERSE 3 *As he begins to raise his voice...*



HOW TO SAVE A LIFE

He will do one of two things...

Musical notation for the first staff of the first section, featuring a drum set icon on the left and a series of eighth notes with 'x' and '+' symbols above them.

Musical notation for the second staff of the first section, featuring a drum set icon on the left and a series of eighth notes with 'x' and 'o' symbols above them.

CHORUS

Where did I go wrong?...

Musical notation for the first staff of the chorus, featuring a drum set icon on the left and a series of eighth notes with 'x' and '+' symbols above them.

Musical notation for the second staff of the chorus, featuring a drum set icon on the left and two first/second endings marked with '1.' and '2.' above them.

Musical notation for the third staff of the chorus, featuring a drum set icon on the left and a long horizontal line with a '7' above it, indicating a seven-measure rest.

CHORUS

Where did I go wrong?...

Musical notation for the first staff of the second chorus, featuring a drum set icon on the left and a series of eighth notes with 'x' and '+' symbols above them.

Musical notation for the second staff of the second chorus, featuring a drum set icon on the left and a series of eighth notes with 'x' and '+' symbols above them.

HOW TO SAVE A LIFE

CHORUS

Where did I go wrong?...

Musical notation for the first line of the chorus. It consists of a single drum staff with a treble clef and a key signature of one flat. The notation includes eighth notes with stems, some marked with an 'x' for a snare drum. There are two accents (circles with a plus sign) above the notes. The line ends with a double bar line and a repeat sign.

Musical notation for the second line of the chorus. It continues the drum staff from the first line. The phrase *How to save a life* is written above the staff. The notation includes eighth notes with stems and accents. The line ends with a double bar line and a repeat sign.

OUTRO

How to save a life

Musical notation for the first line of the outro. It consists of a single drum staff with a treble clef and a key signature of one flat. The notation includes eighth notes with stems and accents. The phrase *How to save a life* is written above the staff. The line ends with a double bar line and a repeat sign.

Musical notation for the second line of the outro. It continues the drum staff from the first line. The phrase *How to save a life* is written above the staff. The notation includes eighth notes with stems and accents. The line ends with a double bar line and a repeat sign.

Musical notation for the third line of the outro. It continues the drum staff from the second line. The notation includes eighth notes with stems and accents. The line ends with a double bar line and a repeat sign.

Musical notation for the final line of the outro. It continues the drum staff from the third line. The notation includes eighth notes with stems and accents. The line ends with a double bar line and a repeat sign.