

LEVITATING

Level One

♩ = 103

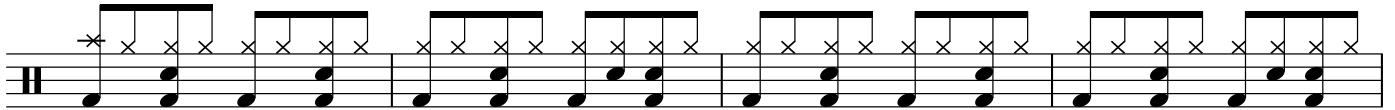
DUA LIPA

INTRO

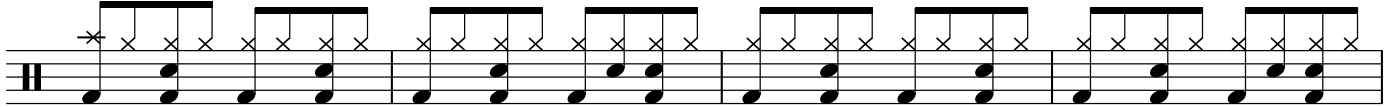


VERSE 1

If you wanna run away...



Glitter in the sky



PRE-CHORUS

You want me...

the milky way...

Yeah, yeah, yeah, yeah, yeah



CHORUS

You...

moonlight...

starlight...

come on dance with me...



You...

moonlight...

starlight...

come on dance with me...

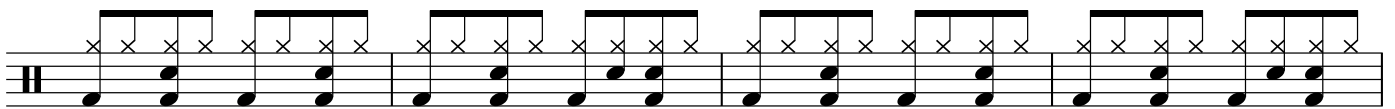
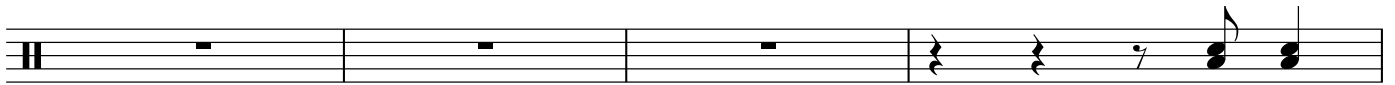


LEVITATING

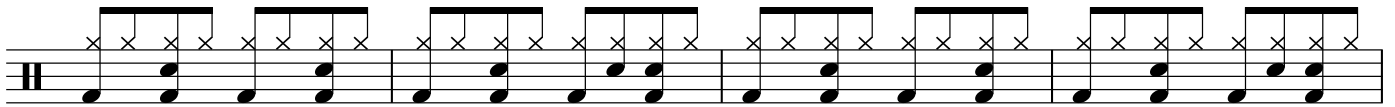
Level One

DUA LIPA

VERSE 2

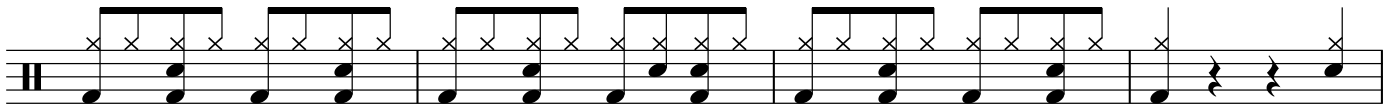


left foot right foot



catch up

head up



PRE-CHORUS

You want me...

the milky way...

Yeah, yeah, yeah, yeah, yeah



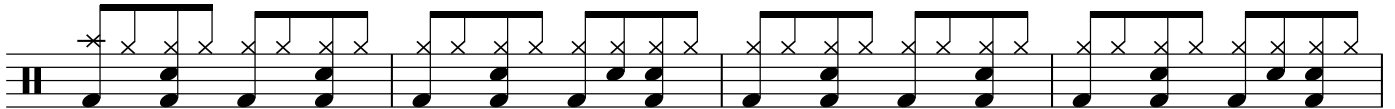
CHORUS

You...

moonlight...

starlight...

come on dance with me...



LEVITATING

Level One

DUA LIPA

You... moonlight... starlight... come on dance with me...



POST-CHORUS

You can fly away... You can fly away... Yeah, yeah, yeah, yeah, yeah

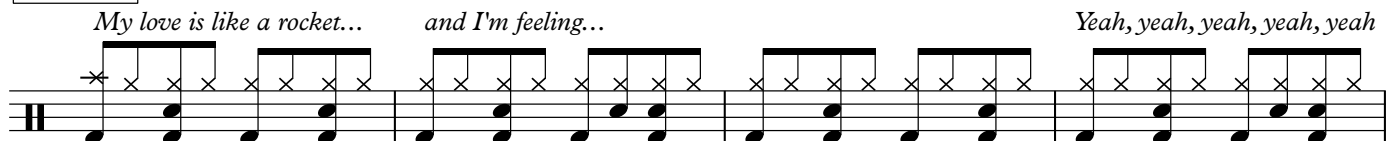


You can fly away... You can fly away... Yeah, yeah, yeah, yeah, yeah



BRIDGE

My love is like a rocket... and I'm feeling... Yeah, yeah, yeah, yeah, yeah

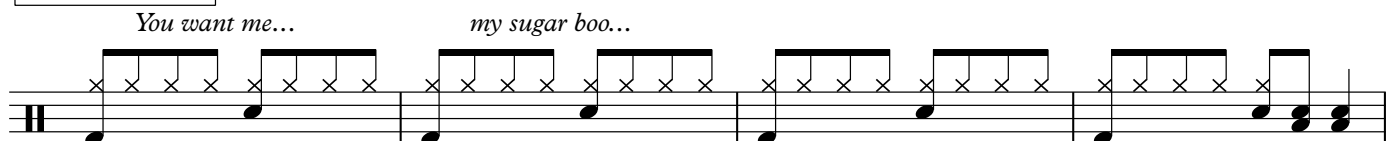


My love is like a rocket... and I'm feeling... Yeah, yeah, yeah, yeah, yeah



PRE-CHORUS

You want me... my sugar boo...



LEVITATING

Level One

DUA LIPA

CHORUS

You... moonlight... starlight... come on dance with me...

A single musical staff with a treble clef and a key signature of one flat. It contains four measures, each with a single quarter note on the second line of the staff, representing the lyrics 'You...', 'moonlight...', 'starlight...', and 'come on dance with me...'.

POST-CHORUS

You can fly away... You can fly away... Yeah, yeah, yeah, yeah, yeah

A musical staff with a treble clef and a key signature of one flat. It contains six measures of music. The first two measures are for the lyrics 'You can fly away...' and the last four are for 'Yeah, yeah, yeah, yeah, yeah'. The music features a rhythmic guitar pattern with eighth notes and chords, indicated by 'x' marks above the notes.

A second musical staff identical to the one above, containing the same rhythmic guitar pattern and lyrics for the post-chorus.

CHORUS

You... moonlight... starlight... come on dance with me...

A musical staff with a treble clef and a key signature of one flat. It contains four measures of music. The first two measures are for the lyrics 'You...' and 'moonlight...' and the last two are for 'starlight...' and 'come on dance with me...'. The bass line is more complex than in the first chorus, with eighth notes and chords.


A second musical staff identical to the one above, continuing the complex bass line for the second chorus.

A third musical staff identical to the ones above, continuing the complex bass line for the second chorus.

An empty musical staff with a treble clef and a key signature of one flat, consisting of two measures.

LEVITATING

Drum Set Legend



A musical staff with a treble clef and a double bar line at the end. The staff contains six notes, each with a downward-pointing stem and a specific symbol above it. From left to right: a note with an asterisk symbol above it, a note with an 'x' symbol above it, a note with an 'x' symbol above it, a note with a solid black dot above it, a note with a solid black dot above it, and a note with a solid black dot above it.

Crash Hi-Hat Ride Cymbal Snare Drum Floor Tom Bass Drum