

Don't Start Now

Level One

Dua Lipa

INTRO

Musical notation for the Intro section, featuring a single staff with a treble clef and a series of 'x' marks above the staff, indicating a drum pattern.

VERSE

Musical notation for the first line of the Verse section, featuring a single staff with a treble clef, a series of 'x' marks above the staff, and a series of eighth notes below the staff.

Musical notation for the second line of the Verse section, featuring a single staff with a treble clef, a series of 'x' marks above the staff, and a series of eighth notes below the staff.

Musical notation for the third line of the Verse section, featuring a single staff with a treble clef, a series of 'x' marks above the staff, and a series of eighth notes below the staff.

PRE-CHORUS

Musical notation for the first line of the Pre-Chorus section, featuring a single staff with a treble clef and a series of 'x' marks above the staff.

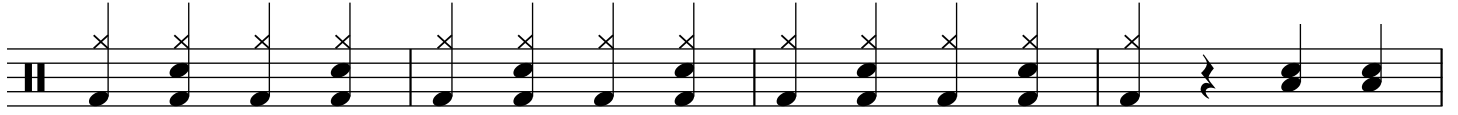
Musical notation for the second line of the Pre-Chorus section, featuring a single staff with a treble clef, a series of 'x' marks above the staff, and a series of eighth notes below the staff.

CHORUS

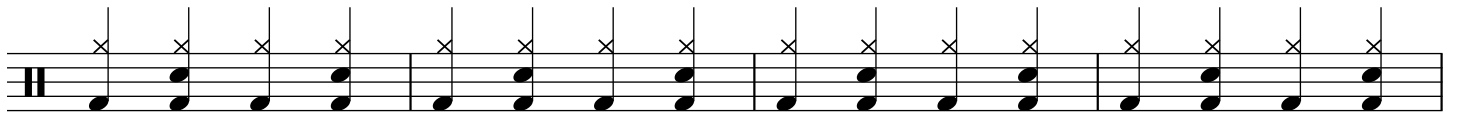
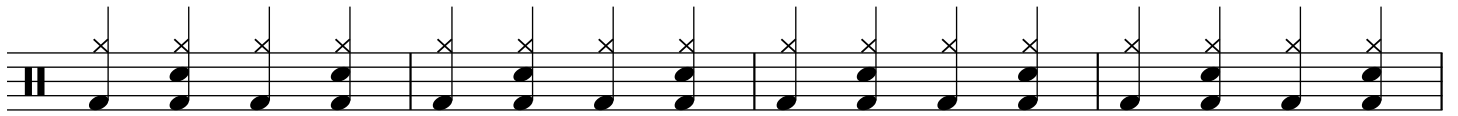
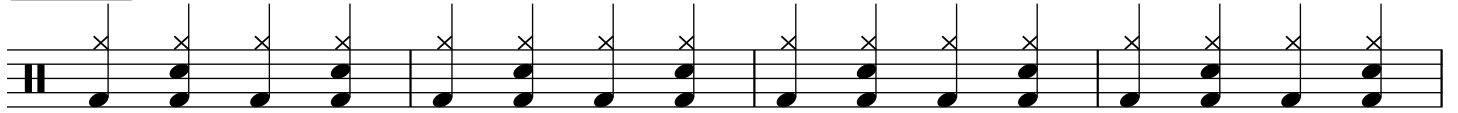
Musical notation for the first line of the Chorus section, featuring a single staff with a treble clef, a series of 'x' marks above the staff, and a series of eighth notes below the staff.

Don't Start Now

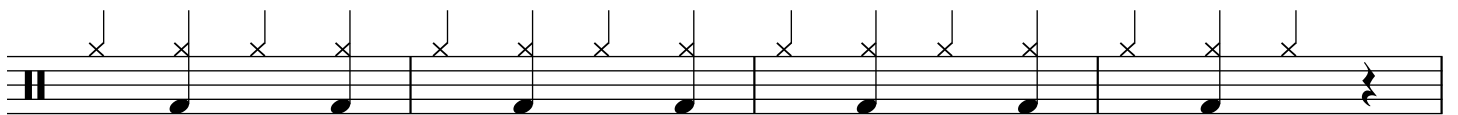
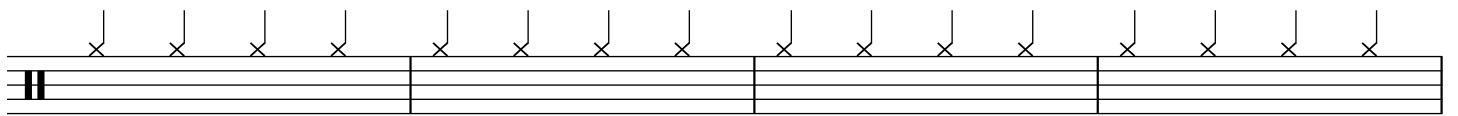
Level One



VERSE 2



PRE-CHORUS



CHORUS



Don't Start Now

Level One

Musical notation for the first section of the song, featuring a drum staff with a double bar line and a series of eighth notes with 'x' marks above them.

BRIDGE

Musical notation for the bridge section, featuring a drum staff with a double bar line and a series of eighth notes with 'x' marks above them.

Musical notation for the second section of the song, featuring a drum staff with a double bar line and a series of eighth notes with 'x' marks above them.

PRE-CHORUS

Musical notation for the pre-chorus section, featuring a drum staff with a double bar line and 'x' marks above the staff.

Musical notation for the third section of the song, featuring a drum staff with a double bar line and eighth notes with 'x' marks above them.

CHORUS

Musical notation for the chorus section, featuring a drum staff with a double bar line and a series of eighth notes with 'x' marks above them.

Don't Start Now

Level One

A musical staff with a treble clef and a double bar line at the beginning. The staff contains a sequence of notes and rests. Above the staff, there are vertical stems with 'x' marks, indicating hi-hat sounds. The notes are quarter notes, and the rests are quarter rests. The pattern repeats every four measures.

OUTRO

A musical staff with a treble clef and a double bar line at the beginning. The staff contains a sequence of notes and rests. Above the staff, there are vertical stems with 'x' marks, indicating hi-hat sounds. The notes are quarter notes, and the rests are quarter rests. The pattern repeats every four measures.

A musical staff with a treble clef and a double bar line at the beginning. The staff contains a sequence of notes and rests. Above the staff, there are vertical stems with 'x' marks, indicating hi-hat sounds. The notes are quarter notes, and the rests are quarter rests. The pattern repeats every four measures, ending with a final two-measure phrase.

Drum Set Legend

A diagram showing five symbols on a staff. From left to right: a vertical stem with an 'x' (Hi-Hat), a vertical stem with an 'x' (Ride), a quarter note (Snare Drum), a quarter note (Bass Drum), and a quarter note (Floor Tom). Below the staff, the labels "Hi-Hat", "Ride", "Snare Drum", "Bass Drum", and "Floor Tom" are aligned with their respective symbols.